



Connecting to IC Wireless Network Guide

Version 1.0

- King Abdullah University For Science and Technology
- Saudi Arabia – Thuwal
- <http://www.kaust.edu.sa>
- Information Technology
- Network and Communications
- Engineering Team

Table of Contents

Table of Contents	2
Windows 7 Configuration	3
Windows 8/ 10 Configuration	8
MAC OS.....	11
Android devices	13
iPhone & iPad	14
Contact IT Helpdesk.....	15

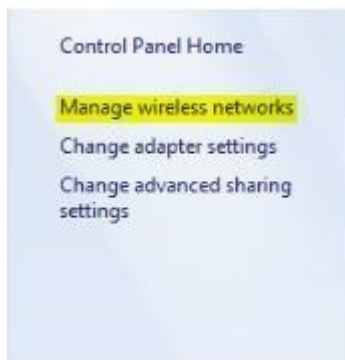
Windows 7 Configuration

*Click on the items in the following order:

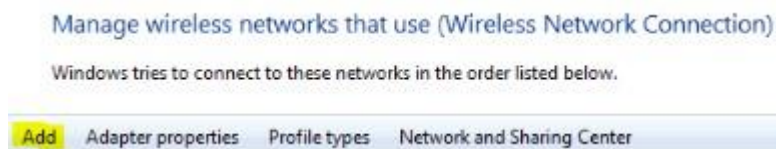
1. Start→Network→ network & Sharing Center.



2. On the left side, click “**Manage wireless networks**”



3. Click “Add”

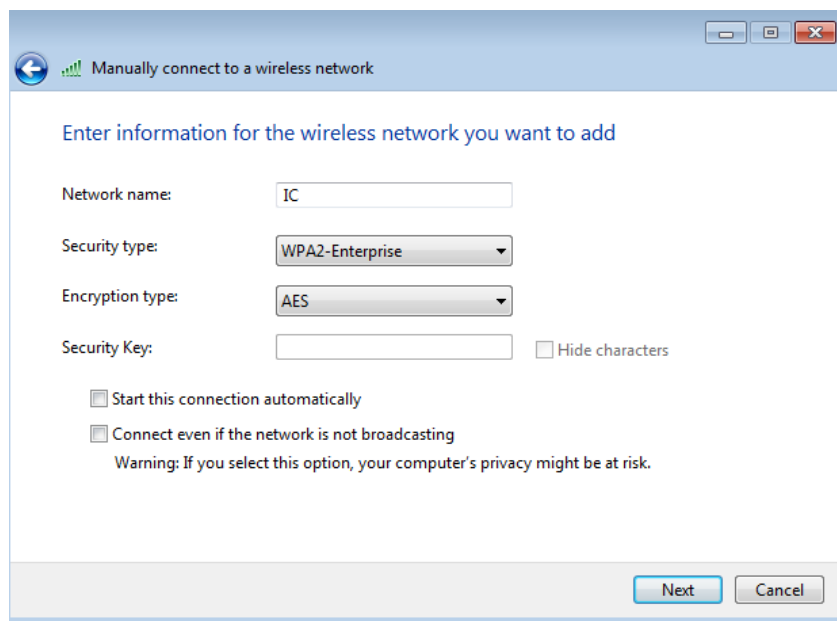


4. Manually create a network profile

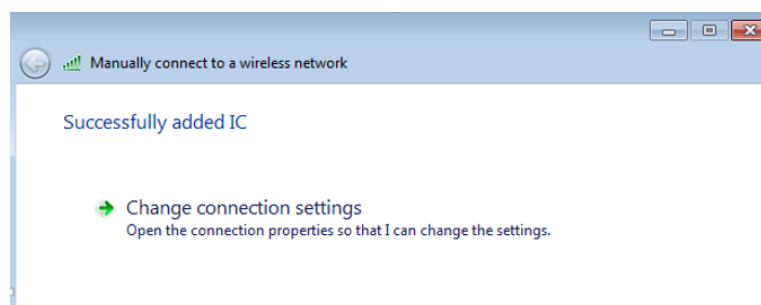


5. Fill the data as follow:

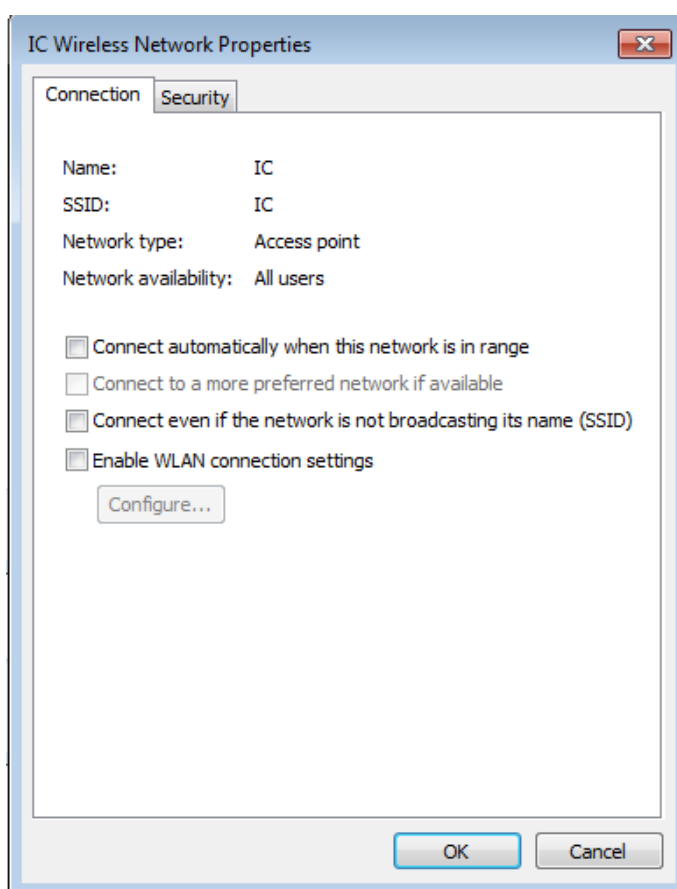
- Network name: IC **"Case Sensitive"**
- Security Type: WPA2-Enterprise
- Encryption: AES
- Security Key: Leave it Blank
- Un-check **"Start this connection automatically"**.



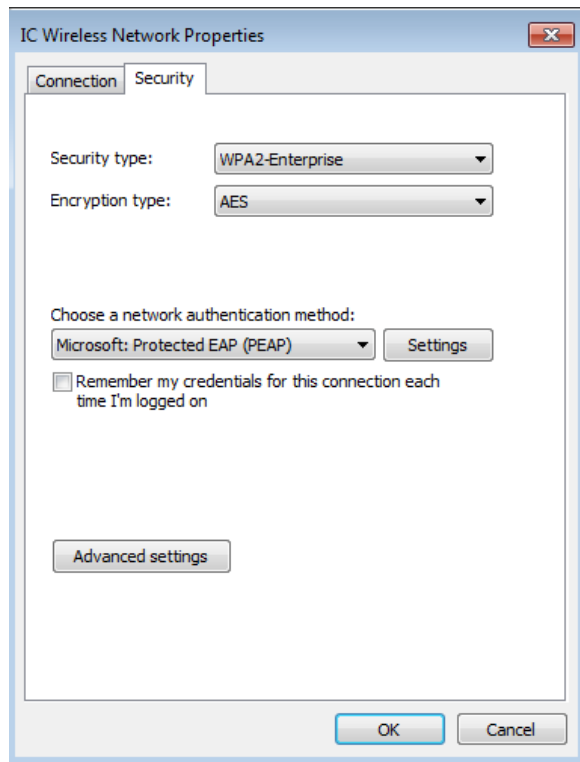
6. Click “Next”, ensure that you receive the window (**Successfully added iCampus**)



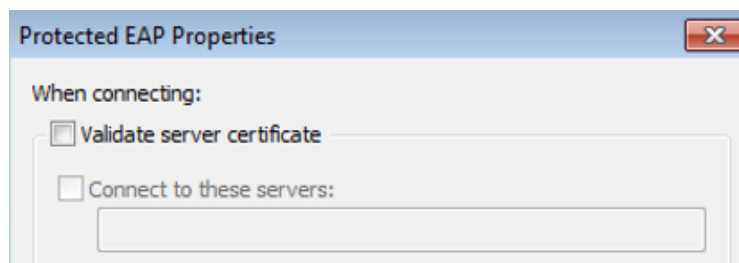
7. Choose “**Change connection setting**”, and ensure the following configuration on the connection tab as below:



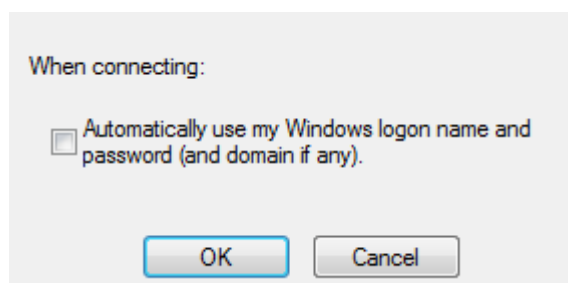
8. Click on “Security tab” and un-check “**Remember my credentials for this connection each time I’m logged on**”, and make sure the authentication method selected is “**PEAP**” as below:



9. Click on “**Settings**” and uncheck the “**Validate server certificate**”



10. Then “**Configure**” and un-check the following box.



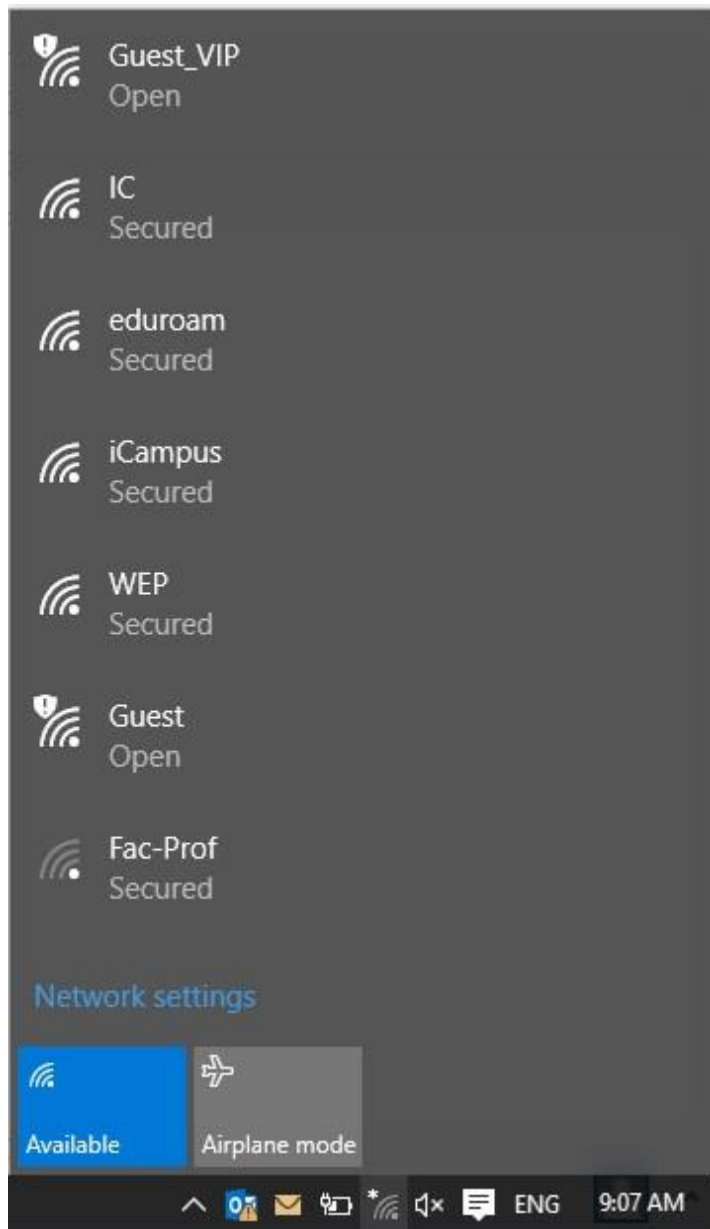
11. Now connect to IC network from the taskbar icon, enter your KAUST AD username and credential and accept the certificate warning.



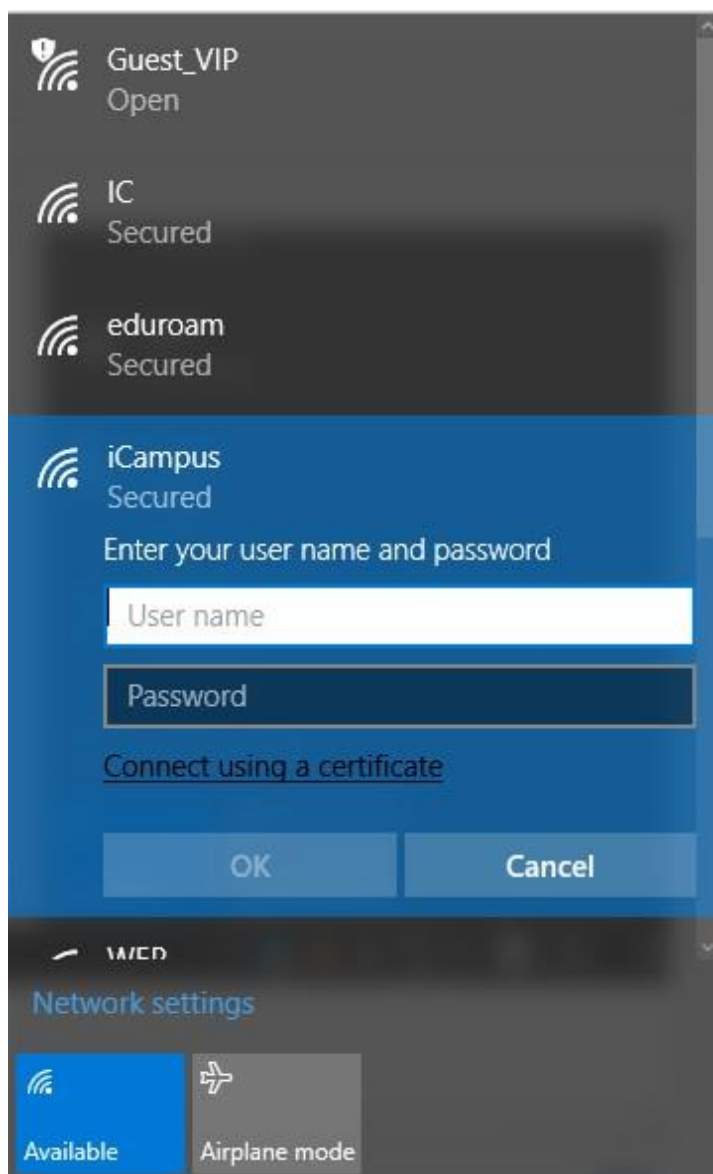
Windows 8/ 10 Configuration

To connect using windows 10 OR Windows 8, please follow the below 3 steps:

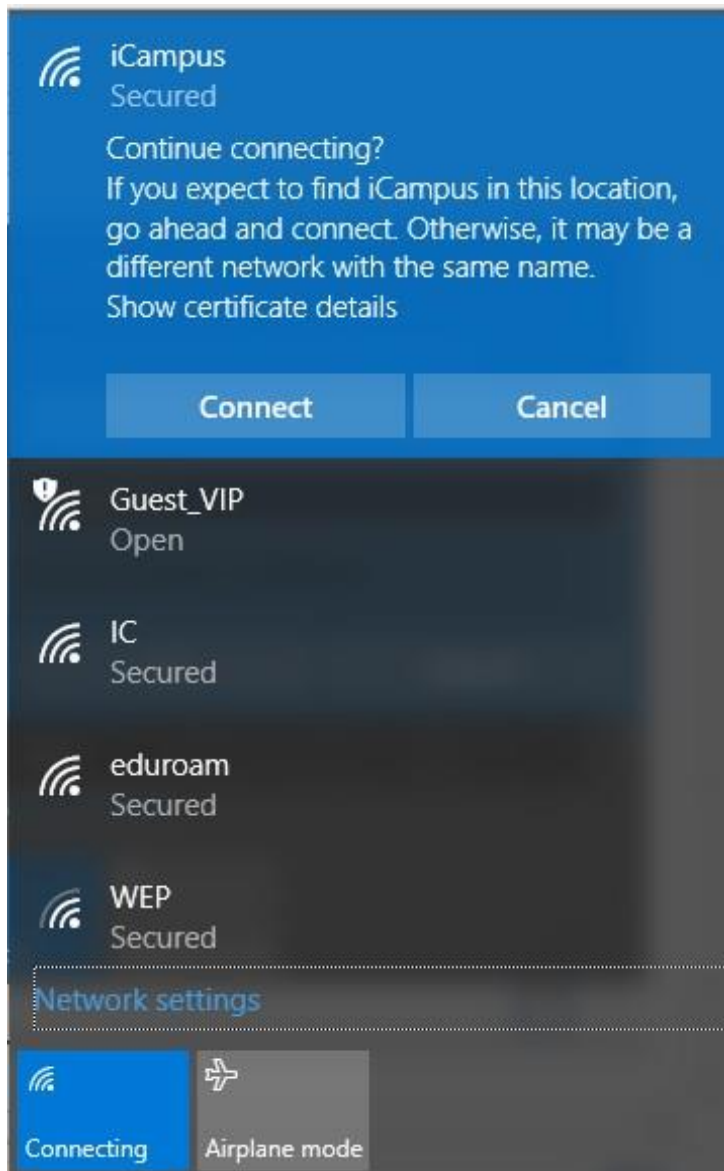
1. Click on the network icon at the taskbar, choose IC



2. Enter your KAUST username and password

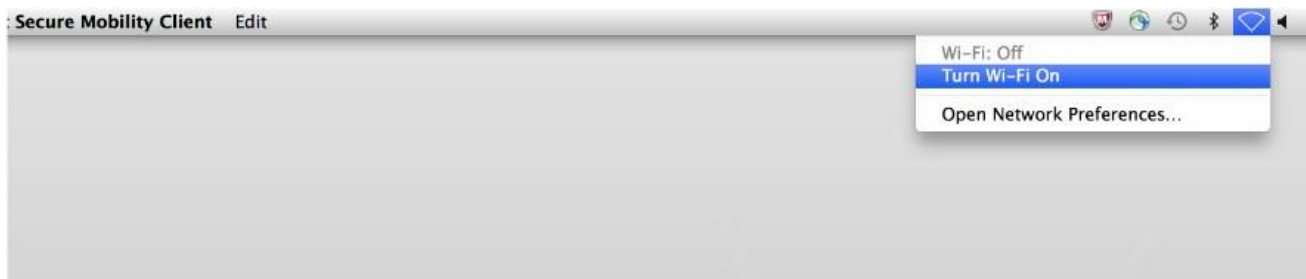


3. Accept the certificate and connect.



MAC OS

1. Turn on Wi-Fi



2. Choose "iCampus" Network.



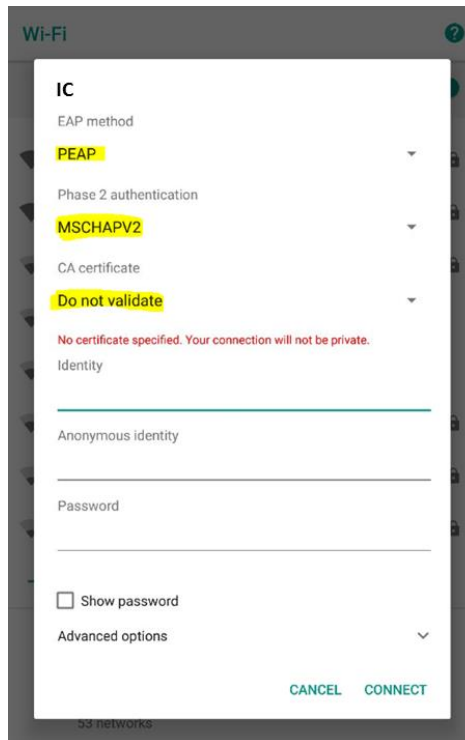
3. Enter your KAUST username and password, and press OK
4. When the certificate warning appear, please click accept.

1. For the certificate warning, click ignore



Android devices

1. Enable the WiFi, and select “IC”
2. You will be prompted to configure the below settings:
 - a. Select the EAP method as “PEAP”
 - b. Select the Phase 2 authentication as “MSCHAPV2”
 - c. Do no validate certificate or keep it not selected



3. Enter your KAUST user name under “Identity” and the password under “Password”, skip the Anonymous Identity

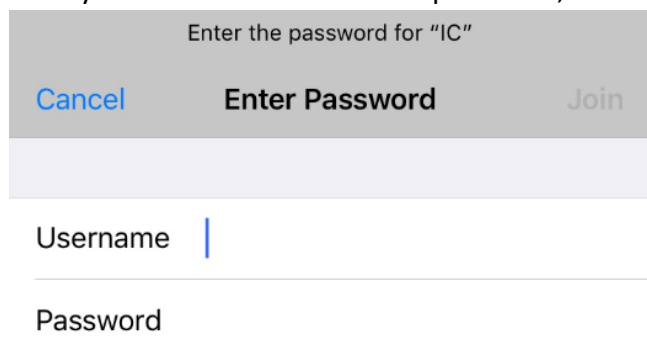
Identity

Anonymous identity

Password

iPhone & iPad

1. Enable the WiFi, and select iCampus.
2. Enter your KAUST username and password, then click **Join**



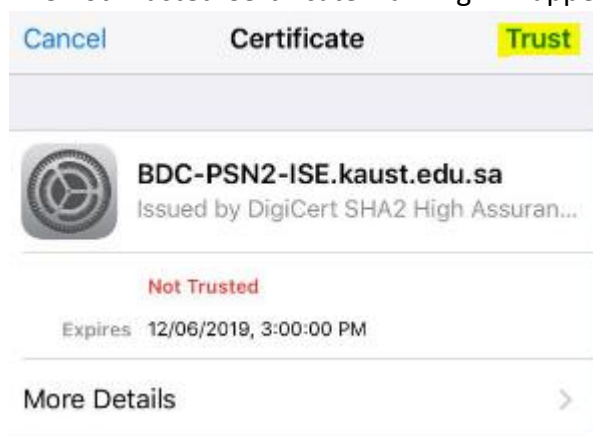
Enter the password for "IC"

Cancel Enter Password Join


Username |

Password

3. The not Trusted Certificate warning will appear, click on **Trust**



Cancel Certificate Trust

 **BDC-PSN2-ISE.kaust.edu.sa**
Issued by DigiCert SHA2 High Assuran...

Not Trusted

Expires 12/06/2019, 3:00:00 PM

More Details >

Contact IT Helpdesk

For further assistance:

Please contact the KAUST IT service desk:

Phone: External +966 0 2 808 0900 or internal 900

Email: ithelpdesk@kaust.edu.sa



King Abdullah University For Science and Technology

Saudi Arabia – Thuwal

Information Technology

Network and Communications

Operation Team

KAUST website at www.kaust.edu.sa

THIS DOCUMENT CONTAINS VALUABLE TRADE SECRETS AND CONFIDENTIAL INFORMATION OF KAUST NETWORK INFRASTRUCTURE AND SHALL NOT BE DISCLOSED TO ANY PERSON, ORGANIZATION, OR ENTITY UNLESS SUCH DISCLOSURE IS SUBJECT TO THE PROVISIONS OF A WRITTEN NONDISCLOSURE AND PROPRIETARY RIGHTS AGREEMENT OR INTELLECTUAL PROPERTY LICENSE AGREEMENT APPROVED BY KAUST IT. THE DISTRIBUTION OF THIS DOCUMENT DOES NOT GRANT ANY LICENSE IN OR RIGHTS, IN WHOLE OR IN PART, TO THE CONTENT, THE PRODUCT(S), TECHNOLOGY OF INTELLECTUAL PROPERTY DESCRIBED HEREIN.

ITNI Engineering - Service Design Package

Copyright © 2013, KAUST IT All
rights reserved.